

Filter

LTC455 Series

SMD TYPE



APPLICATIONS

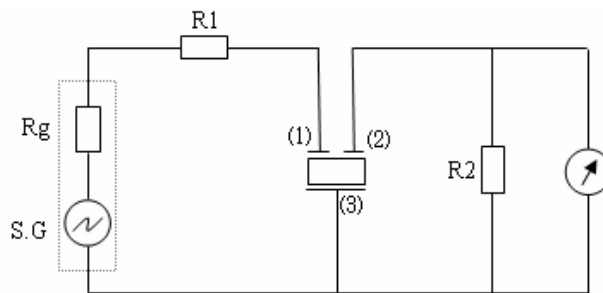
- ▶ Keyboard
- ▶ Micro processor
- ▶ Home appliance
- ▶ Remote controller

TECHNICAL CHARACTERISTICS

Part no.		Center Frequency (MHz)	Insertion Loss(dB)max		6Db Band With(KHz) min	40Db Band With LTC455U (KHZ)min	40Db Band With LTC455U (KHZ)min	Spurious Attenuation(45 5±100khz)(dn) min		Input/Output Impedance
			455U	455W						
455BU	455BW	455±1.5	4	4	±15.0	±30	±30	27	50	1000
455CU	455CW	455±1.5	4	4	±12.5	±25	±25	27	50	1000
455DU	455DW	455±1.5	4	4	±10.0	±20	±20	27	50	1500
455EU	455EW	455±1.5	6	4	±7.5	±15	±15	27	50	1500
455FU	455FW	455±1.5	6	6	±6.0	±12	±12	27	47	1500
455GU	455GW	455±1.5	6	6	±4.5	±10	±10	25	47	1500
455HU	455HW	455±1.5	6	6	±3.0	±9.0	±9.0	25	47	1500
455IU	455IW	455±1.5	6	6	±2.0	±7.5	±7.5	25	47	1500

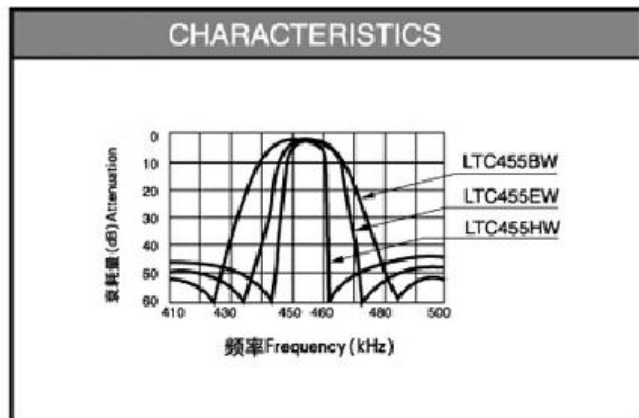
APPLICATION CIRCUIT

<LTC455_W > / <LTC455_U>



$$R1+Rg=R2=Input/Output Impedance$$

<LTC455_W > / <LTC455_U>



Filter

LTC455 Series

SMD TYPE

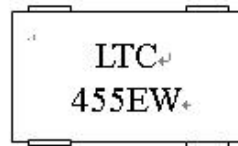
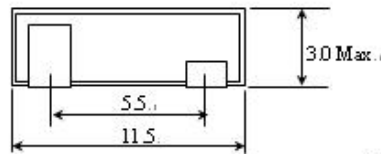
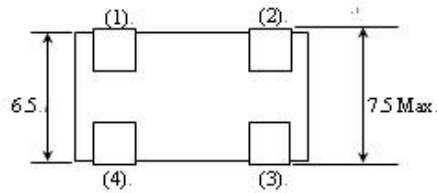


APPLICATIONS

- ▶ Keyboard
- ▶ Micro processor
- ▶ Home appliance
- ▶ Remote controller

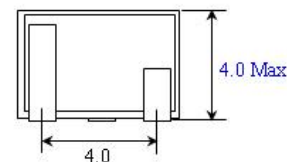
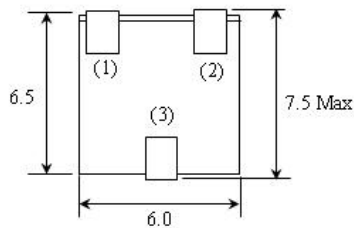
DEMENSIONS

<LTC455_W >



- (1) Input⁺
 - (2) Output⁺
 - (3)(4) Ground⁺
- Standard tolerance: ± 0.3 .

<LTC455_U >



- ① Input
 - ② Output
 - ③ Ground
- Unit: mm
Standard tolerance: ± 0.3