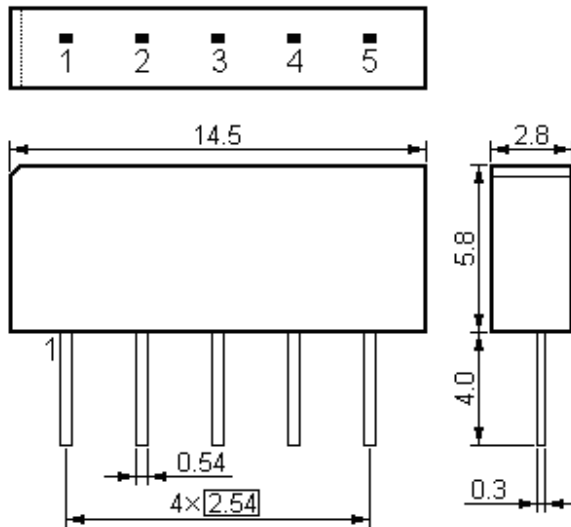




Features

- IF filter for digital cable TV
- Plastic Package

Package Dimension

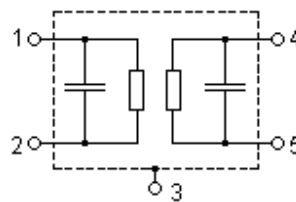
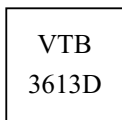


Pin Configuration

- 1 Input
- 2 Input - ground
- 3 Chip carrier - ground
- 4 Output
- 5 Output

Plastic Package **SIP5D**
Unit: mm

Marking



Performance

Maximum Ratings

Rating		Value	Unit
Operable Temperature Range	T_A	-25 to +65	
Storage Temperature Range	T_{stg}	-40 to +85	
DC Voltage (between any terminals)	V_{DC}	5	V
AC Voltage (between any terminals)	V_{PP}	10	V

Electronic Characteristics

Reference temperature:	$T_A = 25\text{ °C}$
Terminating source impedance:	$Z_S = 50\ \Omega$
Terminating load impedance:	$Z_L = 2\text{ k}\Omega \parallel 3\text{ pF}$

Item		min.	typ.	max.	Unit
Center frequency (Center between 10 dB points)	f_C	36.070	36.125	36.180	MHz
Insertion attenuation Reference level for the following data	IL 36.13 MHz	18.8	20.3	21.8	dB
Pass bandwidth $\alpha_{rel} \leq 1\text{ dB}$	BW_{1dB}	—	7.2	—	MHz
$\alpha_{rel} \leq 3\text{ dB}$	BW_{3dB}	—	7.9	—	MHz
$\alpha_{rel} \leq 30\text{ dB}$	BW_{30dB}	—	9.4	—	MHz
Relative attenuation	α_{rel}				
	32.32 MHz	—	1.3	—	dB
	39.93 MHz	0.3	1.3	2.3	dB
	32.13 MHz	2.4	3.6	4.8	dB
	40.13 MHz	2.4	3.6	4.8	dB
	31.25 MHz	28.0	36.0	—	dB
	47.25 MHz	42.0	50.0	—	dB
Lower sidelobe	25.00 ... 29.50 MHz	24.0	30.0	—	dB
	29.50 ... 31.25 MHz	27.0	33.0	—	dB
Upper sidelobe	40.90 ... 43.50 MHz	26.0	32.0	—	dB
	43.50 ... 50.00 MHz	28.0	37.0	—	dB
Temperature coefficient of frequency	TC_f	—	-72	—	ppm/K

Frequency Response

