
SURFACE ACOUSTIC WAVE FILTER

1. APPLICATION: TV IF FILTER

2. SYSTEM: M/N

3. MODEL: VTF4507M

4. ELECTRICAL CHARACTERISTICS

4-1 Insertion Loss:		23.0	3 dB
4-2 Attenuation (ref. : 44.0 MHz):			
fp-6	39.75 MHz	-42.0	dB Max.
fp-4.5	41.25 MHz	-17.5	2.5 dB
fp-3.58	42.17 MHz	-2.5	1.5 dB
fp	45.75 MHz	-6.5	1.5 dB
fp+1.5	47.25 MHz	-42.0	dB Max.
4-3 Amplitude ripple within passband:		0.5	dB Max.
4-4 Outband Rejection:			
35.00 to 39.75 MHz		-36.0	dB Max.
47.25 to 55.00 MHz		-36.0	dB Max.
4-5 Temperature Coefficient Of Center Frequency:		-75	ppm/ Max.
4-6 Maximum DC Voltage:		10V	DC.
4-7 Operating Temperature Range:		-10	to +70
4-8 Storage Temperature Range:		-20	to +80

5. RELIABILITY TEST

5-1 Mechanical Shock

The components shall remain within the electrical specifications after 1000 shocks, acceleration 392 m/s^2 , duration 6 milliseconds.

5-2 Vibration Fatigue

The components shall remain within the electrical specifications after loaded vibration of 600 rpm to 3300 rpm, amplitude 1.5 mm, x, y, z, direction for 2 hours.

5-3 Terminal Strength

The components shall remain within the electrical specifications after pulled 2 kgs weight for 10 seconds towards an axis of each terminal.

5-4 High Temperature Storage

The components shall remain within the electrical specifications after being kept at the
85 ambient temperature for 96 hours, then kept at room temperature for 2 hours.

5-5 Low Temperature Storage

The components shall remain within the electrical specifications after being kept at the
-25 for 96 hours, then kept at room temperature for 2 hours.

5-6 Humidity Test

The components shall remain within the electrical specifications after being kept

at the

condition of ambient temperature 40 , and 90 to 95% RH for 96 hours, then kept at room temperature and normal humidity for 2 hours.

5-7 Thermal Shock

The components shall remain within the electrical specifications after 10 cycles of Heat-Cycles-Testing (one cycle: -25 for 20 minutes, then 85 for 20 minutes), then kept at room temperature for 2 hours.

5-8 Solder-heat Resistance

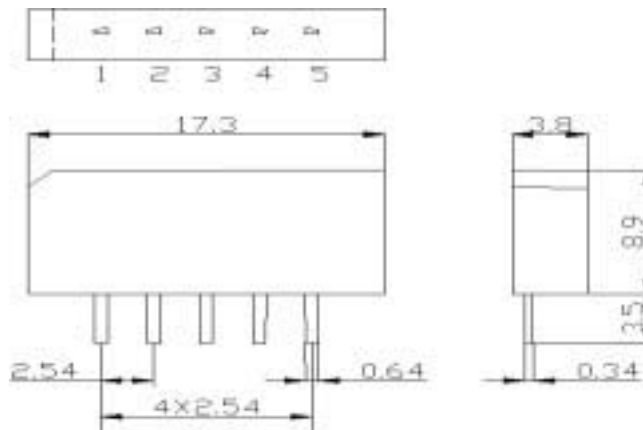
The components shall remain within the electrical specifications after dipped in the solder at 260 for 10 1 seconds, then kept at room temperature for 2 hours. (Terminal must be dipped leaving 1.5 mm from the case.)

5-9 Solderability

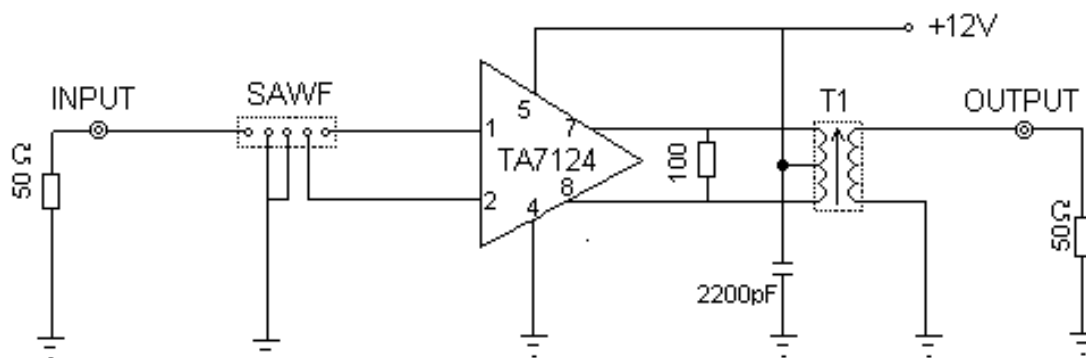
Solderability of terminals shall be kept at more than 90% after dipped in the solder flux at 235 5 for 2 0.5 seconds.

6. PACKAGE DIMENSION

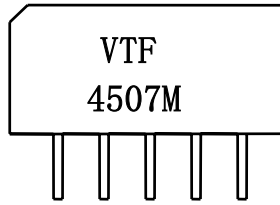
1. INPUT
2. INPUT
3. GROUND
4. OUTPUT
5. OUTPUT



7. MEASUREMENT CIRCUIT



8. MARKING



VTF4507M TRADEMARK
 1 Model
 Pin No.1

9. FREQUENCY RESPONSE

