

# DIELECTRIC FILTER

- S-DFC-A / Cordless telephone
- S-DFC-B / Cordless telephone
- S-DFC-C / Mobile communication
- S-DFC-D / Mobile communication
- S-DFC-E / GPS & GIS

SBTRON

# DIELECTRIC FILTER S-DFC-A

Cordless telephone



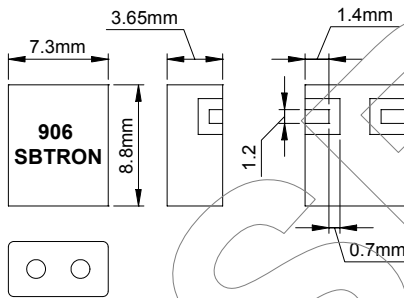
## APPLICATIONS

- ▶ Cordless telephone
- ▶ Home appliance
- ▶ Communications

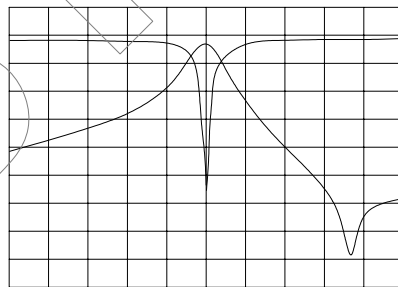
### TECHNICAL CHARACTERISTICS

Part no.	Center Frequency (MHz)	Band width (MHz)	Insertion loss (dB)	Ripple (dB)	VSWR (in BW)	Attenuation (dB)
S-DFC-A886P002	886.0	2	≦ 3.0	≦ 0.5	≦ 2.0	≧ 24 (f0 -44MHz) ≧ 30 (f0+44MHz)
S-DFC-A931P002	931.0	2	≦ 3.0	≦ 0.5	≦ 2.0	≧ 30 (f0 -44MHz) ≧ 24 (f0+44MHz)
S-DFC-A866P004	866.0	4	≦ 3.0	≦ 0.5	≦ 2.0	≧ 38 (f0 -150MHz) ≧ 50 (f0+150MHz)
S-DFC-A963P002	963.0	2	≦ 3.0	≦ 0.5	≦ 2.0	≧ 30 (f0 -44MHz) ≧ 24 (f0+44MHz)
S-DFC-A903P002	903.0	2	≦ 4.0	≦ 0.5	≦ 2.0	≧ 25 (927MHz)
S-DFC-A927P002	927.0	2	≦ 4.0	≦ 0.5	≦ 2.0	≧ 25 (903MHz)
S-DFC-A817P002	817.0	2	≦ 4.0	≦ 0.5	≦ 2.0	≧ 20 (f0 -24MHz) ≧ 23 (f0+24MHz)
S-DFC-A906P006	906.0	6	≦ 4.0	≦ 0.5	≦ 2.0	≧ 25 (f0 -50MHz) ≧ 30 (f0+50MHz)
S-DFC-A914P001	914.5	1	≦ 3.5	≦ 0.5	≦ 2.0	≧ 24 (f0 -44MHz) ≧ 30 (f0+44MHz)
S-DFC-A959P001	959.5	1	≦ 3.5	≦ 0.5	≦ 2.0	≧ 30 (f0 -44MHz) ≧ 24 (f0+44MHz)
S-DFC-A2403P006	2403.3	6	≦ 3.5	≦ 0.5	≦ 2.0	≧ 32 (2475MHz)
S-DFC-A2475P006	2475.3	6	≦ 3.5	≦ 0.5	≦ 2.0	≧ 33 (2403MHz)

### DIMENSIONS AND CHARACTERISTICS

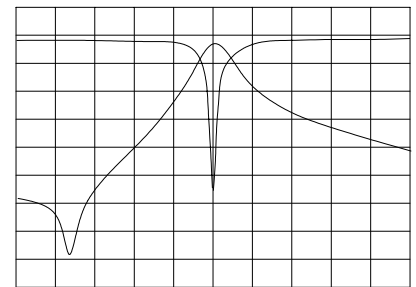


DFC903P002 Transmission & Reflection



CENTER 903.0MHz SPAN 200.0MHz

DFC927P002 Transmission & Reflection



CENTER 927.0MHz SPAN 200.0MHz

Specifications subjects to change without notice & If you need other specifications, Contact our factory.

### PACKAGING METHOD AND QUANTITY

Type	Packaging method	Quantity
S-DFC-A-Freq-TU	Tube package	100 PCs
S-DFC-A-Freq-TA	Tape & Reel package	1,000 PCs

# DIELECTRIC FILTER S-DFC-B Cordless telephone



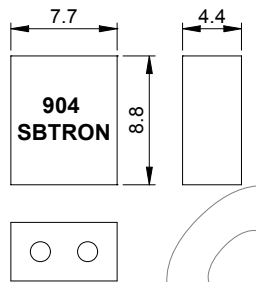
## APPLICATIONS

- ▶ Cordless telephone
- ▶ Home appliance
- ▶ Communications

### TECHNICAL CHARACTERISTICS

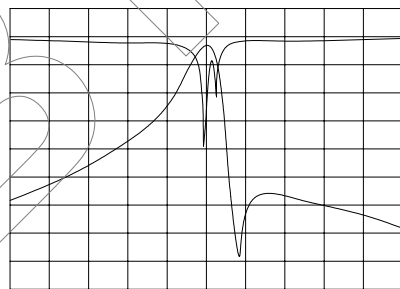
Part no.	Center Frequency (MHz)	Band width (MHz)	Insertion loss (dB)	Ripple (dB)	VSWR (in BW)	Attenuation (dB)
S-DFC-B904P003	903.75	2.7	≤ 3.0	≤ 0.5	≤ 2.0	≥ 20 (926MHz)
S-DFC-B926P003	926.25	2.7	≤ 3.0	≤ 0.5	≤ 2.0	≥ 21 (904MHz)

### DIMENSIONS AND CHARACTERISTICS



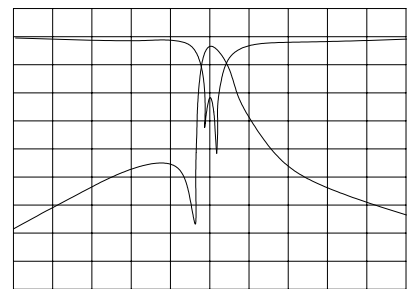
Unit : mm

DFC904P003 Transmission & Reflection



CENTER 903.75MHz SPAN 200.0MHz

DFC926P003 Transmission & Reflection



CENTER 926.25MHz SPAN 200.0MHz

Specifications subjects to change without notice & If you need other specifications, Contact our factory.

### PACKAGING METHOD AND QUANTITY

Type	Packaging method	Quantity
S-DFC-B -Freq-TU	Tube package	100 PCs
S-DFC-B -Freq-TA	Tape & Reel package	1,000 PCs

# DIELECTRIC FILTER S-DFC-C

Mobile communication



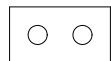
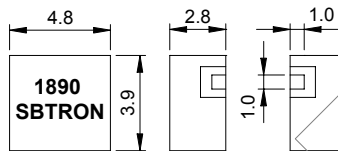
## APPLICATIONS

- ▶ Mobile communication
- ▶ Home appliance
- ▶ Communications

### TECHNICAL CHARACTERISTICS

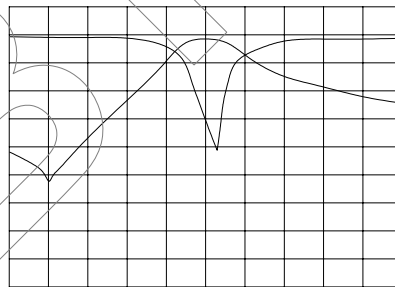
Part no.	Center Frequency (MHz)	Band width (MHz)	Insertion loss (dB)	Ripple (dB)	VSWR (in BW)	Attenuation (dB)
S-DFC-C1890P020	1890	20	$\leq 2.0$	$\leq 0.5$	$\leq 2.0$	$\geq 45$ (1660~1680MHz) $\geq 45$ (1790~1810MHz)
S-DFC-C1910P020	1910	20	$\leq 2.0$	$\leq 0.5$	$\leq 2.0$	$\geq 45$ (1675~1700MHz) $\geq 45$ (1787~1810MHz)
S-DFC-C1920P020	1920	20	$\leq 2.0$	$\leq 0.5$	$\leq 2.0$	$\geq 45$ (1690~1710MHz) $\geq 45$ (1800~1820MHz)

### DIMENSIONS AND CHARACTERISTICS



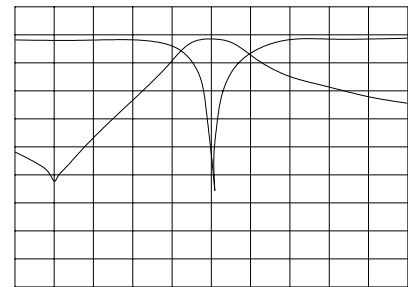
Unit : mm

DFC1890P020 Transmission & Reflection



CENTER 1890MHz SPAN 500.0MHz

DFC1910P020 Transmission & Reflection



CENTER 1910MHz SPAN 500.0MHz

Specifications subjects to change without notice & If you need other specifications, Contact our factory.

### PACKAGING METHOD AND QUANTITY

Type	Packaging method	Quantity
S-DFC-C -Freq-TU	Tube package	100 PCs
S-DFC-C -Freq-TA	Tape & Reel package	1,000 PCs

# DIELECTRIC FILTER S-DFC-D

Mobile communication



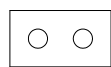
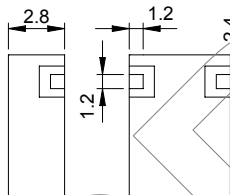
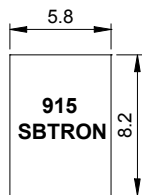
## APPLICATIONS

- ▶ Mobile communication
- ▶ Home appliance
- ▶ Communications

### TECHNICAL CHARACTERISTICS

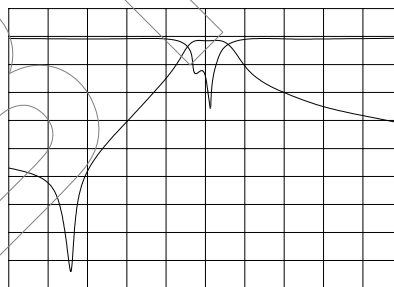
Part no.	Center Frequency (MHz)	Band width (MHz)	Insertion loss (dB)	Ripple (dB)	VSWR (in BW)	Attenuation (dB)
S-DFC-D881P025	881.5	25	$\leq 2.6$	$\leq 1.2$	$\leq 2.3$	$\geq 9.0$ (824~849MHz) $\geq 6.5$ (914~939MHz) $\geq 17$ (959~984MHz)
S-DFC-D914P021	914.5	21	$\leq 2.0$	$\leq 1.0$	$\leq 2.3$	$\geq 40$ (451~464MHz) $\geq 15.5$ (982~1008MHz) $\geq 33$ (1353~1392MHz) $\geq 40$ (1804~1856MHz)
S-DFC-D915P026	915.0	26	$\leq 2.5$	$\leq 1.2$	$\leq 2.3$	$\geq 27$ (F0-77.5MHz) $\geq 17$ (F0+77.5MHz)
S-DFC-D923P014	923.0	14	$\leq 2.5$	$\leq 1.0$	$\leq 2.3$	$\geq 23$ (F0-77.5MHz) $\geq 17$ (F0+77.5MHz)
S-DFC-D902P025	902.5	25	$\leq 2.6$	$\leq 1.2$	$\leq 2.3$	$\geq 27$ (F0-77.5MHz) $\geq 17$ (F0+77.5MHz)
S-DFC-D947P025	947.5	25	$\leq 2.6$	$\leq 1.2$	$\leq 2.3$	$\geq 27$ (F0-77.5MHz) $\geq 17$ (F0+77.5MHz)

### DIMENSIONS AND CHARACTERISTICS



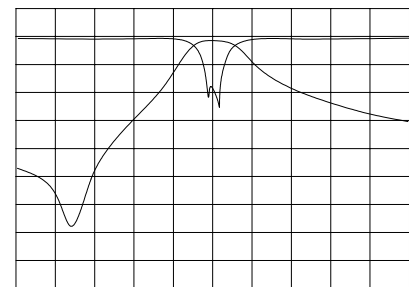
Unit : mm

DFC902P025 Transmission & Reflection



CENTER 902.5MHz SPAN 400.0MHz

DFC915P026 Transmission & Reflection



CENTER 915.0MHz SPAN 400.0MHz

Specifications subjects to change without notice & If you need other specifications, Contact our factory.

### PACKAGING METHOD AND QUANTITY

Type	Packaging method	Quantity
S-DFC-D -Freq-TU	Tube package	100 PCs
S-DFC-D -Freq-TA	Tape & Reel package	1,000 PCs

# DIELECTRIC FILTER S-DFC-E GPS / GIS



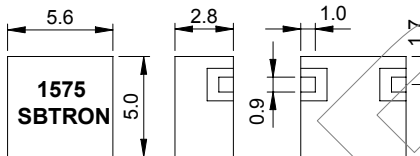
## APPLICATIONS

- ▶ GPS system
- ▶ Home appliance
- ▶ Communications

### TECHNICAL CHARACTERISTICS

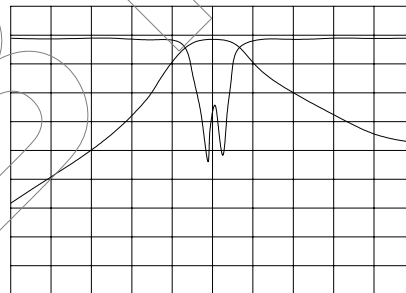
Part no.	Center Frequency (MHz)	Band width (MHz)	Insertion loss (dB)	Ripple (dB)	VSWR (in BW)	Attenuation (dB)
S-DFC-E1575P010	1575.42	10	$\leq 3.0$	$\leq 0.5$	$\leq 2.0$	$\geq 19$ (F0-50MHz) $\geq 15$ (F0+50MHz)
S-DFC-E1575P002	1575.42	2	$\leq 3.5$	$\leq 0.5$	$\leq 2.0$	$\geq 23$ (F0-50MHz) $\geq 18$ (F0+50MHz)

### DIMENSIONS AND CHARACTERISTICS



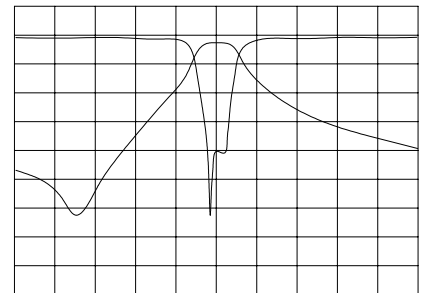
Unit : mm

DFC1575P010 Transmission & Reflection



CENTER 1575.42MHz SPAN 300.0MHz

DFC1575P002 Transmission & Reflection



CENTER 1575.42MHz SPAN 300.0MHz

Specifications subjects to change without notice & If you need other specifications, Contact our factory.

### PACKAGING METHOD AND QUANTITY

Type	Packaging method	Quantity
S-DFC-E -Freq-TU	Tube package	100 PCs
S-DFC-E -Freq-TA	Tape & Reel package	1,000 PCs