

CERAMIC TRAP

- S-XT-MB / TV, VCR stage
- S-XT-MW / Double ceramic trap
- S-XT-MJ / For chrominance carrier

SBTRON

TRAP S-XT-MB

LEADED TYPE
TV/VCR Stage



APPLICATIONS

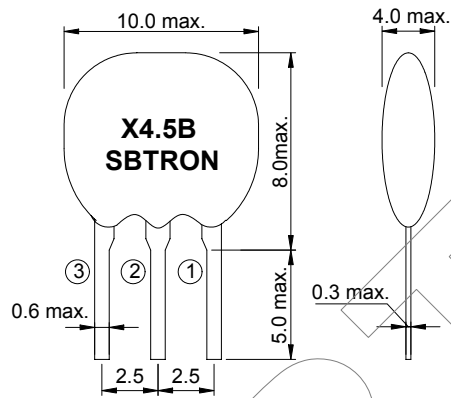
- ▶ TV/VCR stage
- ▶ Home appliance
- ▶ Communications

TECHNICAL CHARACTERISTICS

Part no.	Center Frequency (Fn1) (MHz)	Attenuation (at Fn1) (dB) min.	30dB attenuation BW (Fn1) (KHz) min.
S-XT3.58MB	3.580	25	40 (25dB att. BW)
S-XT4.43MB	4.430	30	40
S-XT4.5MB	4.500	35	50
S-XT5.5MB	5.500	35	70
S-XT5.74MB	5.742	35	70
S-XT6.0MB	6.000	35	70
S-XT6.5MB	6.500	35	70

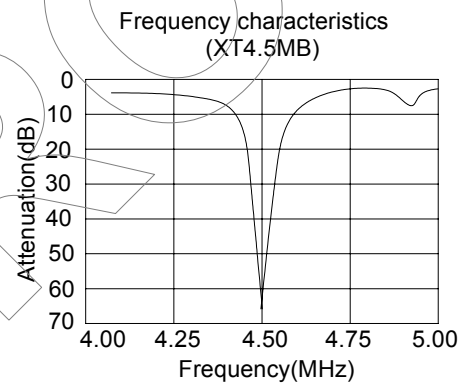
* The level at 1MHz shall be made for a reference (0dB)

DIMENSIONS

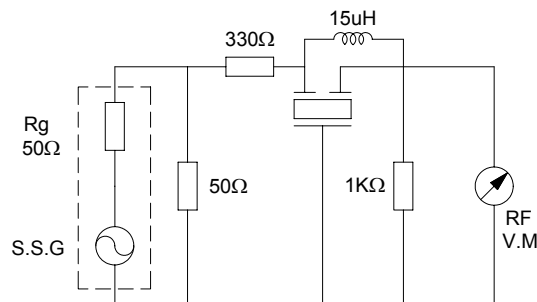


- 1: Input
2: Ground
3: Output

Specifications subjects to change without notice & If you need other specifications, Contact our factory.



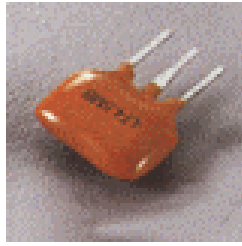
TEST CIRCUIT



TRAP S-XT-MW

LEADED TYPE

Double ceramic trap



APPLICATIONS

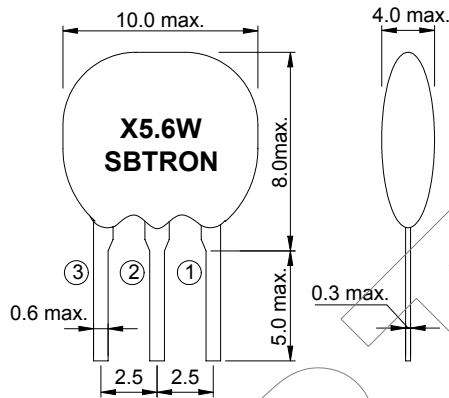
- ▶ TV/VCR stage
- ▶ Home appliance
- ▶ Communications

TECHNICAL CHARACTERISTICS

Part no.	Center Frequency (Fn1) (MHz)	Center Frequency (Fn2) (MHz)	Attenuation (at Fn1) (dB) min.	Attenuation (at Fn2) (dB) min.	30dB attenuation BW (Fn1) (KHz) min.
S-XT4.47MW	4.500	4.724	30	30	50
S-XT4.60MW	4.500	6.000	30	30	50
S-XT5.57MW	5.500	5.742	30	30	50
S-XT5.60MW	5.500	6.000	30	30	50
S-XT5.65MW	5.500	6.500	30	30	50
S-XT6.65MW	6.000	6.500	30	30	70

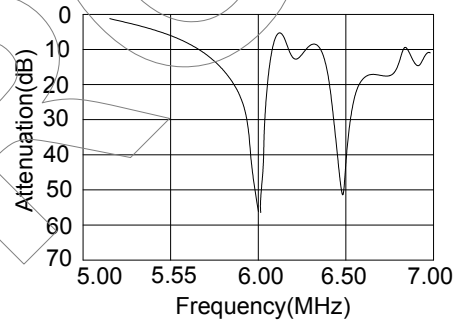
* The level at 1MHz shall be made for a reference (0dB)

DIMENSIONS



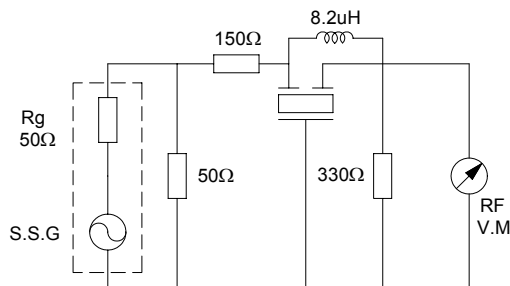
- 1: Input
2: Ground
3: Output

Frequency characteristics (XT6.65MW)



Specifications subjects to change without notice & If you need other specifications, Contact our factory.

TEST CIRCUIT



TRAP S-XT-MJ

LEADED TYPE

Chrominance carrier



APPLICATIONS

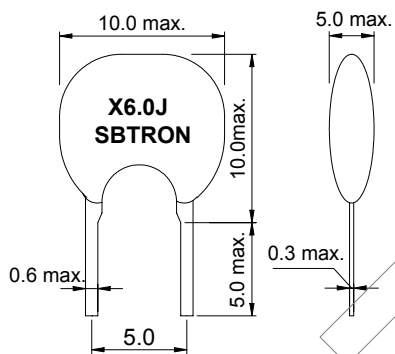
- ▶ TV/VCR stage
- ▶ Home appliance
- ▶ Communications

TECHNICAL CHARACTERISTICS

Part no.	Center Frequency (Fn1) (MHz)	Attenuation (at Fn1) (dB) min.	30dB attenuation BW (Fn1) (KHz) min.
S-XT3.58MJ	3.580	20	20
S-XT4.43MJ	4.430	20	40
S-XT4.5MJ	4.500	20	30
S-XT5.5MJ	5.500	20	30
S-XT5.74MJ	5.742	20	30
S-XT6.0MJ	6.000	20	40
S-XT6.5MJ	6.500	20	40

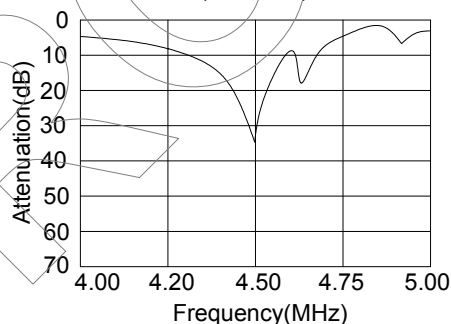
* The level at 1MHz shall be made for a reference (0dB)

DIMENSIONS



- 1: Input
2: Ground
3: Output

Frequency characteristics (XT4.5MJ)



Specifications subjects to change without notice & If you need other specifications, Contact our factory.

TEST CIRCUIT

