

# FILTER

## S-LT10.7M-A10

LEADED TYPE

Low loss



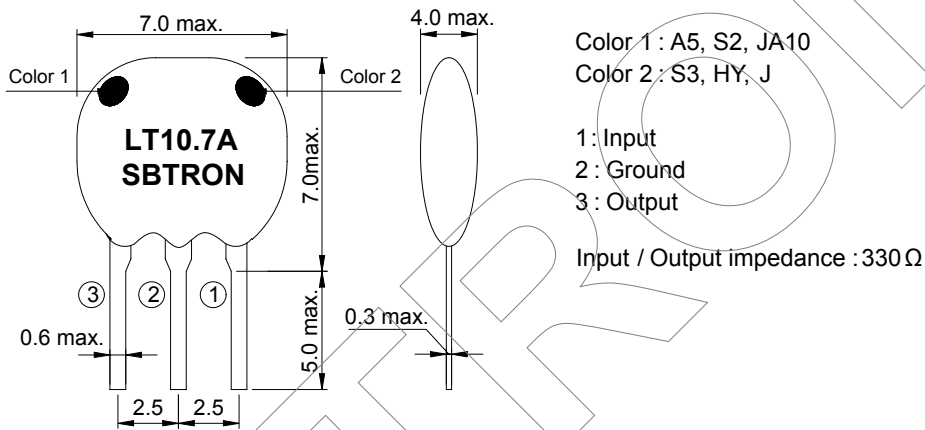
### APPLICATIONS

- ▶ FM receiver
- ▶ Home appliance
- ▶ Communications

### TECHNICAL CHARACTERISTICS

Part no.	3dB Band width (KHz)	20dB Band width (KHz)	Insertion loss (dB) max.	Spurious attenuation (9~12MHz)(dB) min.
S-LT10.7MA5A10	280 ± 50	590	2.5 ± 2.0	30
S-LT10.7MS2A10	230 ± 50	520	3.0 ± 2.0	35
S-LT10.7MS3A10	180 ± 40	470	3.5 ± 1.5	35
S-LT10.7MJA10	150 ± 40	360	4.5 ± 2.0	35

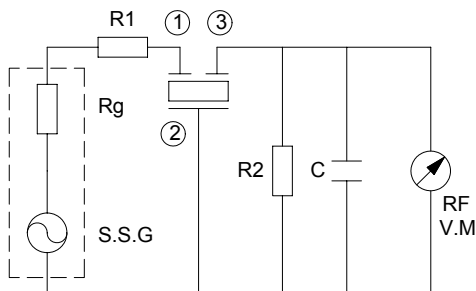
### DIMENSIONS



Color	Center frequency
Black	D : 10.640MHz ± 30KHz
Blue	B : 10.670MHz ± 30KHz
Red	A : 10.700MHz ± 30KHz
Orange	C : 10.730MHz ± 30KHz
White	C : 10.760MHz ± 30KHz

Specifications subjects to change without notice & If you need other specifications, Contact our factory.

### TEST CIRCUIT



$R_g + R_1 = R_2 = 330\Omega$   
 $C = 10\text{pF}$   
 (Including stray capacitance and input capacitance of RF voltmeter)