

FILTER

S-LT10.7M

LEADED TYPE
FM receiver



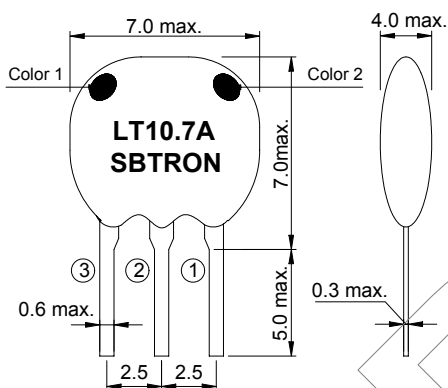
APPLICATIONS

- ▶ FM receiver
- ▶ Home appliance
- ▶ Communications

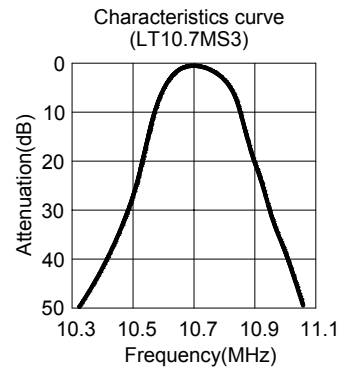
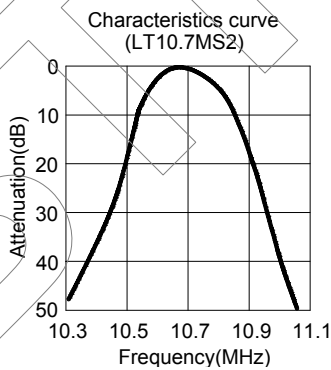
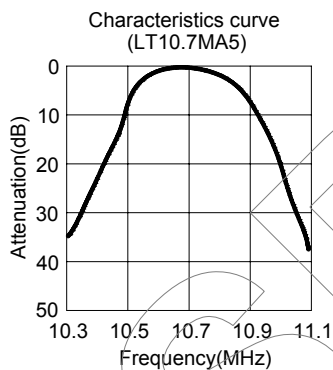
TECHNICAL CHARACTERISTICS

Part no.	3dB Band width (KHz)	20dB Band width (KHz)	Insertion loss (dB) max.	Spurious attenuation (9~12MHz)(dB) min.
S-LT10.7MA5	280 ± 50	650	6	30
S-LT10.7MS2	230 ± 50	600	6	40
S-LT10.7MS3	180 ± 40	520	7	40
S-LT10.7MJ	150 ± 40	400	10	38

DIMENSIONS

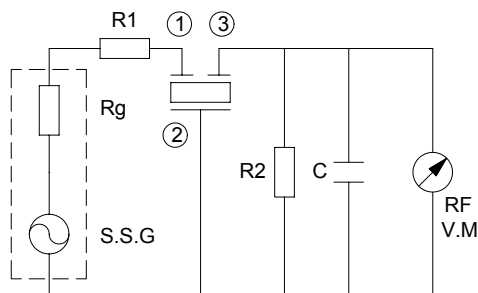


Color	Center frequency
Black	D : 10.640MHz ± 30KHz
Blue	B : 10.670MHz ± 30KHz
Red	A : 10.700MHz ± 30KHz
Orange	C : 10.730MHz ± 30KHz
White	C : 10.760MHz ± 30KHz



Specifications subjects to change without notice & If you need other specifications, Contact our factory.

TEST CIRCUIT



$R_g + R_1 = R_2 = 330\Omega$
 $C = 10\text{pF}$
 (Including stray capacitance and input capacitance of RF voltmeter)