

FILTER

S-LT10.7M-W

LEADED TYPE
Wide/Narrow band



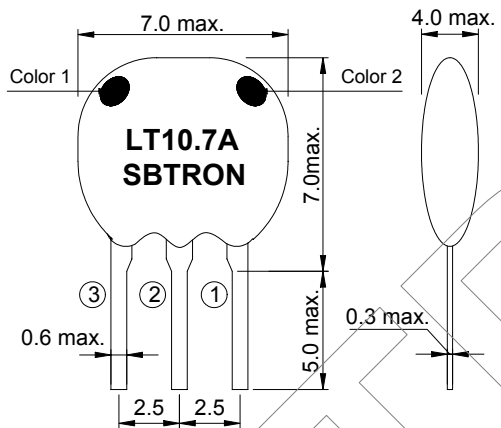
APPLICATIONS

- ▶ FM receiver
- ▶ Home appliance
- ▶ Communications

TECHNICAL CHARACTERISTICS

Part no.	3dB Band width (KHz)	20dB Band width (KHz)	Insertion loss (dB) max.	Spurious attenuation (9~12MHz)(dB) min.
S-LT10.7MA19	350 min.	950	3 ± 2.0	20
S-LT10.7MA20	330 ± 50	680	4 ± 2.0	30
S-LT10.7MHY	110 ± 30	350	7 ± 2.0	30
S-LT10.7MFP	20 min.	95	6.0 max.	24

DIMENSIONS



Color 1 : A5, S2, JA10
Color 2 : S3, HY, J

1 : Input
2 : Ground
3 : Output

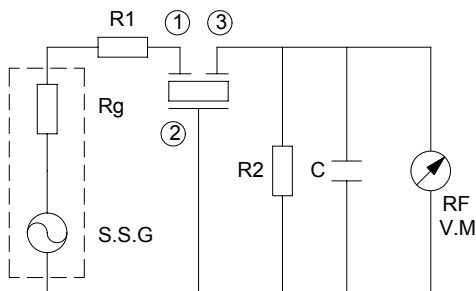
Input / Output impedance

A20, HY : 330 Ω
A19 : 330 Ω
FP : 330 Ω

Color	Center frequency
Black	D : 10.640MHz ± 30KHz
Blue	B : 10.670MHz ± 30KHz
Red	A : 10.700MHz ± 30KHz
Orange	C : 10.730MHz ± 30KHz
White	G : 10.760MHz ± 30KHz

Specifications subjects to change without notice & If you need other specifications, Contact our factory.

TEST CIRCUIT



$R_g + R_1 = R_2 = 330\Omega$
 $C = 10\text{pF}$
(Including stray capacitance and input capacitance of RF voltmeter)