

# FILTER

## S-LTCA/CV10.7M

SMD TYPE



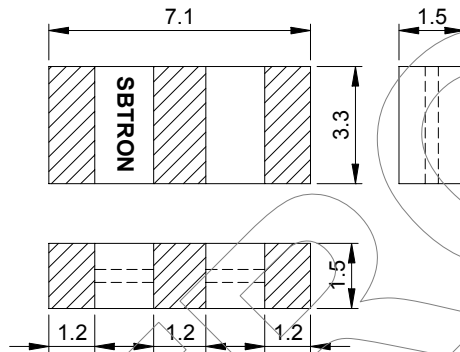
### APPLICATIONS

- ▶ FM receiver
- ▶ Home appliance
- ▶ Communications

### TECHNICAL CHARACTERISTICS

Part no.	3dB Band width (KHz)	20dB Band width (KHz)	Insertion loss (dB) max.	Spurious attenuation (9~12MHz)(dB) min.
S-LTCA10.7MA5	280 ± 50	650	6.0	30
S-LTCA10.7MS2	230 ± 50	600	6.0	30
S-LTCV10.7MA5	280 ± 50	590	3.0 ± 2.0	35
S-LTCV10.7MS2	230 ± 50	510	3.5 ± 2.0	35
S-LTCV10.7MS3	230 ± 50	470	4.0 ± 2.0	35

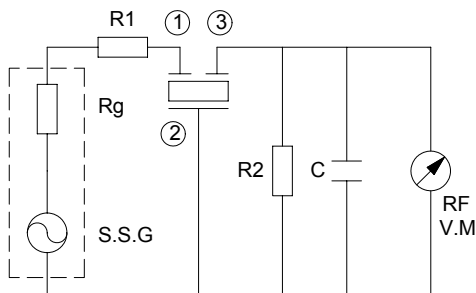
### DIMENSIONS



Input / Output impedance : 330Ω

Specifications subjects to change without notice & If you need other specifications, Contact our factory.

### TEST CIRCUIT



$R_g + R_1 = R_2 = 330\Omega$   
 $C = 10\text{pF}$   
 (Including stray capacitance and input capacitance of RF voltmeter)