

# FILTER S-LTS

LEADED TYPE

TV/VCR Stage / Low spurious



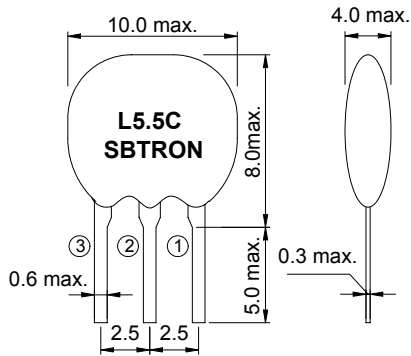
## APPLICATIONS

- ▶ TV/VCR stage
- ▶ Home appliance
- ▶ Communications

### TECHNICAL CHARACTERISTICS

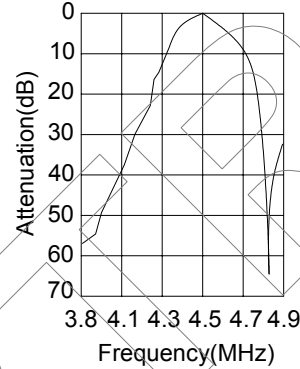
Part no.	Center Freq.(MHz)	3dB Band width (KHz)	20dB Band width (KHz)	Insertion loss (dB) max.	Spurious attenuation (dB) min.	Input / Output impedance(Ω)
S-LTS4.5MCB	4.500	4.5MHz ± 60	600	6.0	30(0 ~ 4.5MHz)	1000
S-LTS4.5MDB	4.500	4.5MHz ± 70	750	6.0	30(0 ~ 4.5MHz)	1000
S-LTS5.5MCB	5.500	5.5MHz ± 60	600	6.0	30(0 ~ 5.5MHz)	600
S-LTS5.5MDB	5.500	5.5MHz ± 80	750	6.0	30(0 ~ 5.5MHz)	600
S-LTS6.0MCB	6.000	6.0MHz ± 60	600	6.0	30(0 ~ 6.0MHz)	470
S-LTS6.0MDB	6.000	6.0MHz ± 80	750	6.0	30(0 ~ 6.0MHz)	470
S-LTS6.5MCB	6.500	6.5MHz ± 70	650	6.0	30(0 ~ 6.5MHz)	470
S-LTS6.5MDB	6.500	6.5MHz ± 80	800	6.0	30(0 ~ 6.5MHz)	470

### DIMENSIONS

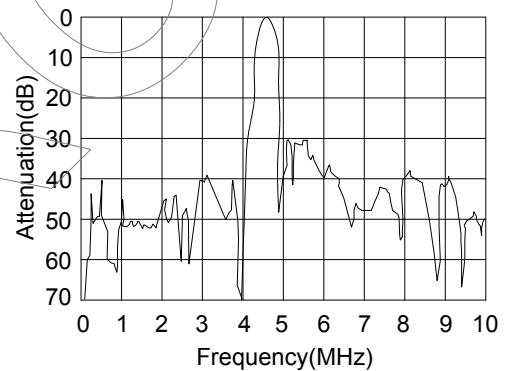


- 1: Input  
2: Ground  
3: Output

Characteristics curve (LTS4.5MCB)

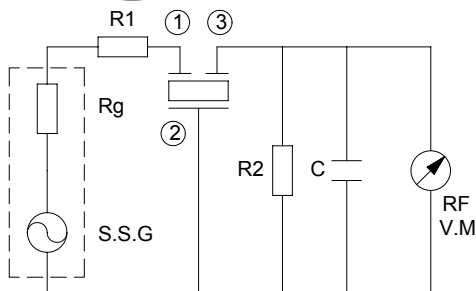


Spurious characteristics (LTS4.5MCB)



Specifications subjects to change without notice & If you need other specifications, Contact our factory.

### TEST CIRCUIT



$R_g + R_1 = R_2 = \text{Input/Output impedance}$   
 $C = 10\text{pF}$   
 (Including stray capacitance and input capacitance of RF voltmeter)