

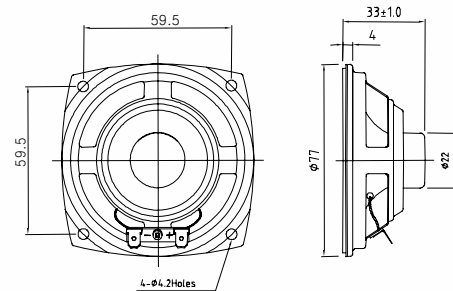
Hi-Fi Speaker (Lug Termin

공개용

Model Name : PSQ-77C3T(77S-C5X05)



Mechanical Dimension



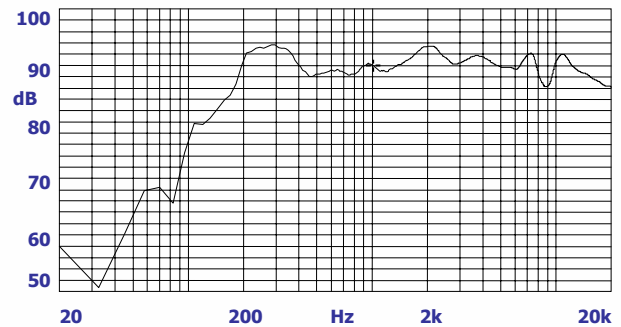
Features

- Wide Frequency Range & High Sound Quality
- Applicable to Car Audio & Slot Machine etc
- Custom design available

Electrical Characteristics

Parameter	Specification	Unit
Impedance 1.0 KHz/ 1.0 Vrms	4	Ω
Sound Pressure Level 1.0W/at 0.5M , Avg. 4 Freq.	90 ± 3	dB
Power Rating (Nom/Max)	8.0 / 10	Watt
Frequency Range (Fo)	0.20 ~ 20	KHz
Dimension (D X H)	77 X 33	mm

Typical Frequency Response



공개용

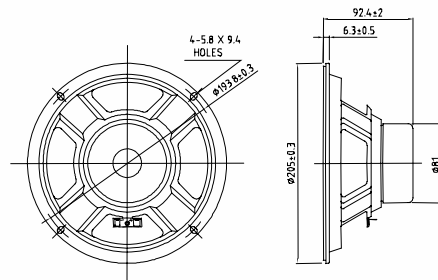
Hi-Fi Speaker (Nd Magnet)

공개용

Model Name : PSC-B0I2T(200F-A6410)



Mechanical Dimension



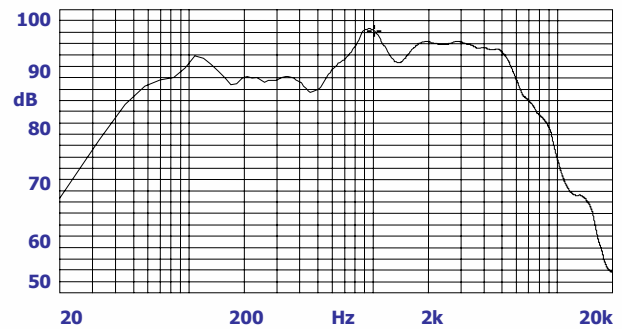
Features

- Wide Frequency Range & High Sound Quality
- Applicable to Audio & Separate Speaker System
- Round Shaped but easy Mountable

Electrical Characteristics

Parameter	Specification	Unit
Impedance 0.3 KHz/ 1.0 Vrms	4	Ω
Sound Pressure Level 1.0W/at 1.0M , Avg. 4 Freq.	88 \pm 3	dB
Power Rating (Nom/Max)	24 / -	Watt
Frequency Range (Fo)	0.06 ~ 7	KHz
Dimension (D X H)	205 X 92.4	mm

Typical Frequency Response



공개용

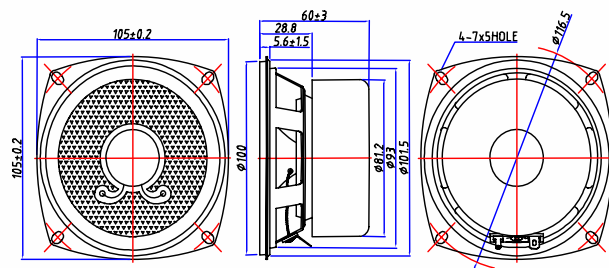
Hi-Fi Square Speaker(Leakage)

공개용

Model Name : PSQ-J0F0T (100F-B5110)



Mechanical Dimension



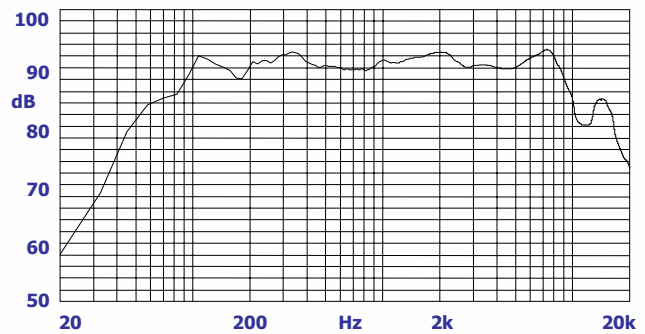
Features

- Wide Frequency Range & High Sound Quality
- Applicable to Car Audio & Slot Machine
- Easy Mountable

Electrical Characteristics

Parameter	Specification	Unit
Impedance 0.3 KHz/ 1.0 Vrms	4	Ω
Sound Pressure Level 1.0W/at 0.5M , Avg. 4 Freq.	90 ± 3	dB
Power Rating (Nom/Max)	10 / 15	Watt
Frequency Range (Fo)	0.07 ~ 20	KHz
Dimension (D X H)	105 X 60	mm

Typical Frequency Response



공개용

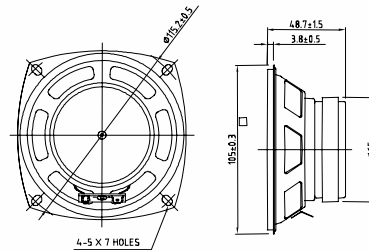
Hi-Fi Square Speaker(Ferrite)

공개용

Model Name : PSQ-A0D9T(100F-A6410)



Mechanical Dimension



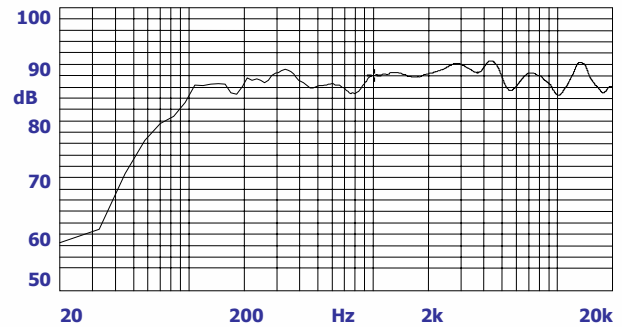
Features

- Wide Frequency Range & High Sound Quality
- Applicable to Audio & Separate Speaker System
- Custom design available

Electrical Characteristics

Parameter	Specification	Unit
Impedance 0.4 KHz/ 1.0 Vrms	4	Ω
Sound Pressure Level 1.0W/at 1.0M , Avg. 4 Freq.	87 ± 3	dB
Power Rating (Nom/Max)	15 / 30	Watt
Frequency Range (Fo)	0.11 ~ 20	KHz
Dimension (D X H)	105 X 48.7	mm

Typical Frequency Response



공개용

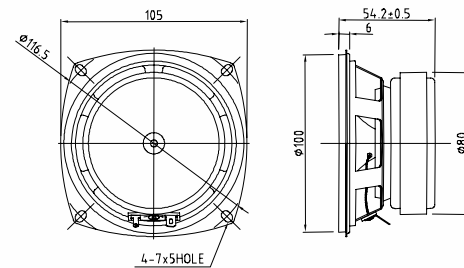
Hi-Fi Square Speaker(Ferrite)

공개용

Model Name : PSQ-A0E4T(100F-F5110)



Mechanical Dimensions



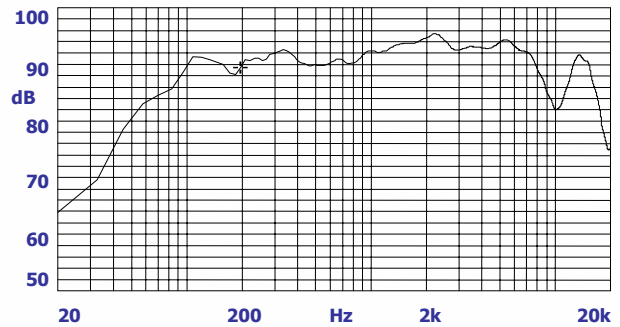
Features

- Wide Frequency Range & High Sound Quality
- Applicable to Audio & Separate Speaker System
- Easy Mountable

Electrical Characteristics

Parameter	Specification	Unit
Impedance 0.5 KHz/ 1.0 Vrms	8	Ω
Sound Pressure Level 1.0W/at 0.5M , Avg. 4 Freq.	91 \pm 3	dB
Power Rating (Nom/Max)	10 / 15	Watt
Frequency Range (Fo)	0.07 ~ 10	KHz
Dimension (D X H)	105 X 54.2	mm

Typical Frequency Response



공개용

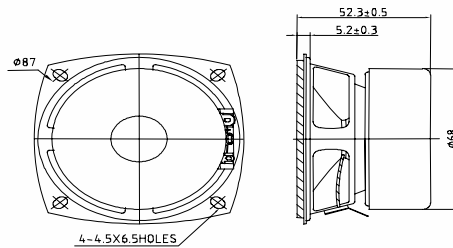
Hi-Fi Square Speaker (Leakage)

공개용

Model Name : PSQ-77E2T(77F-A5214)



Mechanical Dimension



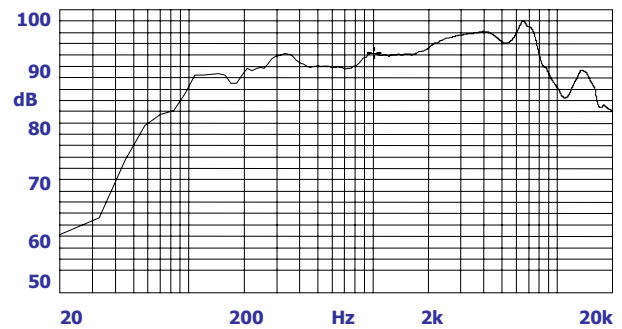
Features

- Wide Frequency Range & High Sound Quality
- Applicable to Audio & Separate Speaker System
- Custom design available

Electrical Characteristics

Parameter	Specification	Unit
Impedance 1.0 KHz/ 1.0 Vrms	4	Ω
Sound Pressure Level 1.0W/at 0.5M , Avg. 4 Freq.	90 \pm 3	dB
Power Rating (Nom/Max)	10 / 15	Watt
Frequency Range (Fo)	0.09 ~ 20	KHz
Dimension (D X H)	77 X 52	mm

Typical Frequency Response



공개용

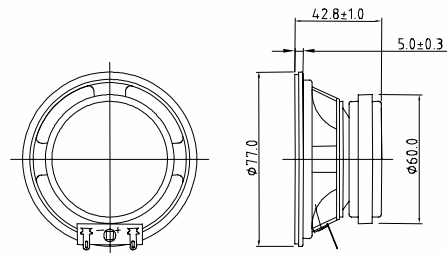
Hi-Fi Speaker(Ferrite Magnet)

공개용

Model Name : PSC-77D3T(77F-F3205)



Mechanical Dimension



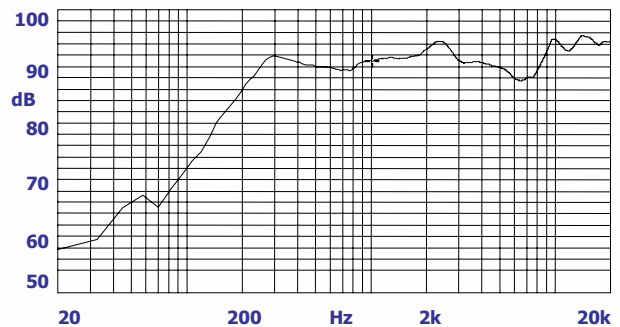
Features

- Wide Frequency Range & High Sound Quality
- Applicable to Car Audio & Separate Speaker System
- Custom design available

Electrical Characteristics

Parameter	Specification	Unit
Impedance 1.0 KHz/ 1.0 Vrms	4	Ω
Sound Pressure Level 1.0W/at 0.5M , Avg. 4 Freq.	90 \pm 3	dB
Power Rating (Nom/Max)	12 / 15	Watt
Frequency Range (Fo)	0.25 ~ 20	KHz
Dimension (D X H)	77 X 42.8	mm

Typical Frequency Response



공개용

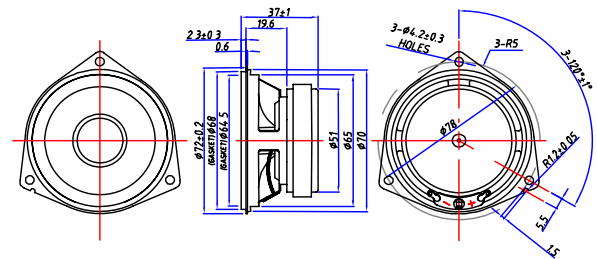
Hi-Fi Speaker(Ferrite Magnet)

공개용

Model Name : PSR-70C7T Series



Mechanical Dimension



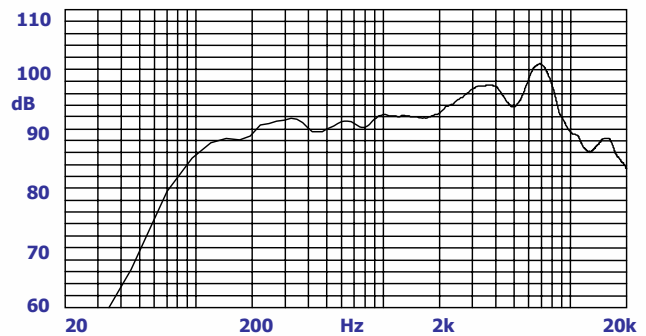
Features

- Wide Frequency Range & High Sound Quality
- Applicable to High End products like Slot Machine etc
- Easy Mountable & good appearance

Electrical Characteristics

Parameter	Specification	Unit
Impedance 0.6 KHz/ 1.0 Vrms	8	Ω
Sound Pressure Level 1.0W/at 0.5M , Avg. 4 Freq.	90 ± 3	dB
Power Rating (Nom/Max)	10 / 15	Watt
Frequency Range (Fo)	0.15 ~ 20	KHz
Dimension (D X H)	72 X 37	mm

Typical Frequency Response



공개용

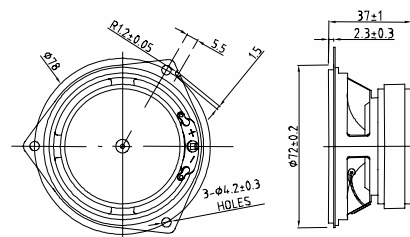
Hi-Fi Speaker(Ferrite Magnet)

공개용

Model Name : PSR-70C7T(70F-A6120)



Mechanical Dimension



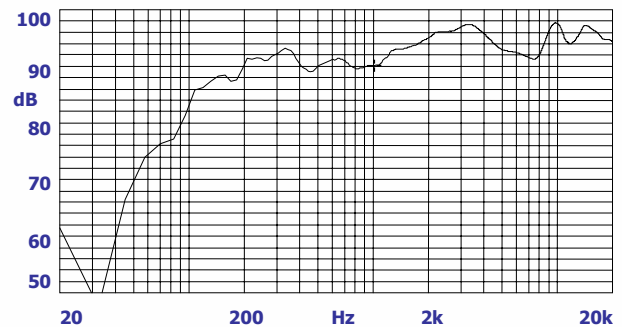
Features

- Wide Frequency Range & High Sound Quality
- Applicable to Car Audio & Separate Speaker System
- Custom design available

Electrical Characteristics

Parameter	Specification	Unit
Impedance 0.6 KHz/ 1.0 Vrms	8	Ω
Sound Pressure Level 1.0W/at 0.5M , Avg. 4 Freq.	91 ± 3	dB
Power Rating (Nom/Max)	10 / 15	Watt
Frequency Range (Fo)	0.16 ~ 20	KHz
Dimension (D X H)	70 X 37	mm

Typical Frequency Response



공개용

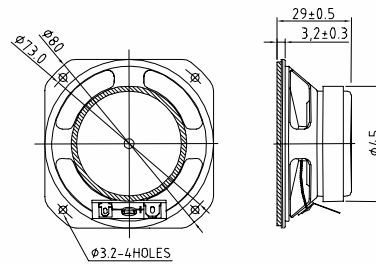
Hi-Fi Square Speaker (Ferrite)

공개용

Model Name : PSQ-66B9T(66F-A5201)



Mechanical Dimension



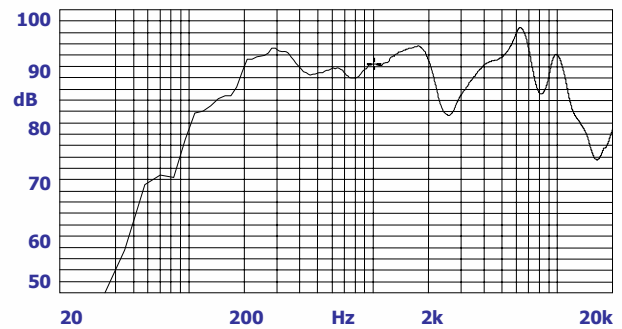
Features

- Wide Frequency Range & High Sound Quality
- Applicable to Car Audio & Separate Speaker System
- Easy Mountable

Electrical Characteristics

Parameter	Specification	Unit
Impedance 1.0 KHz/ 1.0 Vrms	8	Ω
Sound Pressure Level 1.0W/at 0.5M , Avg. 4 Freq.	88 ± 3	dB
Power Rating (Nom/Max)	5.0 / 8.0	Watt
Frequency Range (Fo)	0.20 ~ 18	KHz
Dimension (D X H)	66 X 29	mm

Typical Frequency Response



공개용

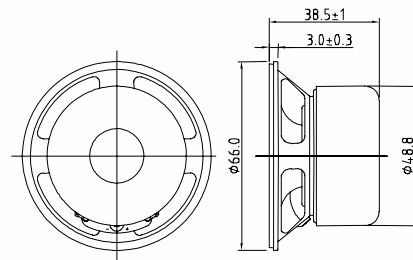
Hi-Fi Speaker(Leakage Flux)

공개용

Model Name : PSC-66C9T(66F-B2411)



Mechanical Dimension



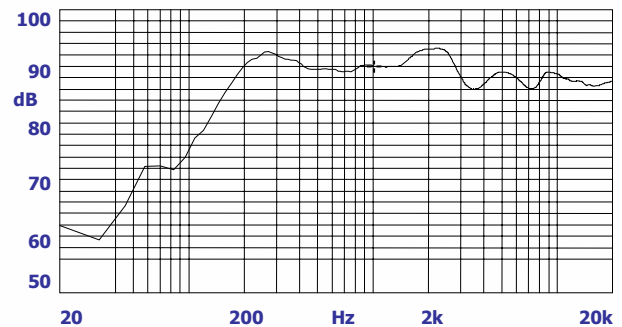
Features

- Wide Frequency Range & High Sound Quality
- Applicable to Separate Speaker System for Music
- Custom design available

Electrical Characteristics

Parameter	Specification	Unit
Impedance 1.0 KHz/ 1.0 Vrms	8	Ω
Sound Pressure Level 1.0W/at 0.5M , Avg. 4 Freq.	89 \pm 3	dB
Power Rating (Nom/Max)	6.0 / 10	Watt
Frequency Range (Fo)	0.20 ~ 20	KHz
Dimension (D X H)	66 X 38.5	mm

Typical Frequency Response



공개용

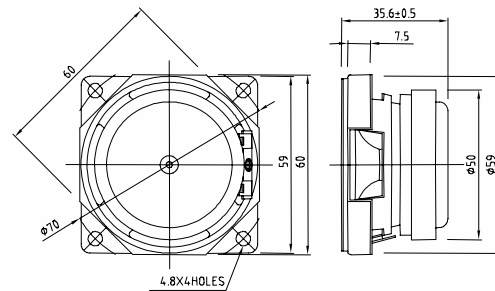
Hi-Fi Square Speaker (Ferrite)

공개용

Model Name : PSQ-60C6T(60F-A6413)



Mechanical Dimensions



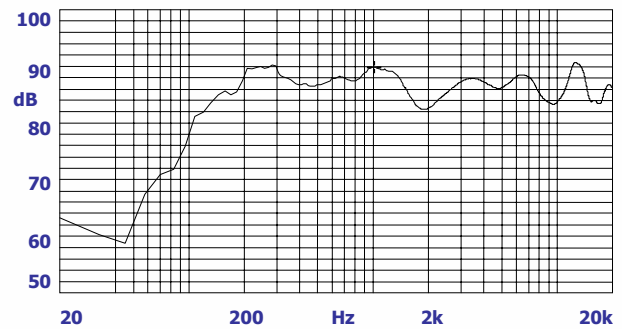
Features

- Wide Frequency Range & High Sound Quality
- Applicable to Car Audio & Separate Speaker System for Music
- Custom design available

Electrical Characteristics

Parameter	Specification	Unit
Impedance 1.0 KHz/ 1.0 Vrms	8	Ω
Sound Pressure Level 1.0W/at 0.5M , Avg. 4 Freq.	87 ± 3	dB
Power Rating (Nom/Max)	8.0 / 12	Watt
Frequency Range (Fo)	0.20 ~ 20	KHz
Dimension (D X H)	60 X 35.6	mm

Typical Frequency Response



공개용

공개용

공개용

공개용

공개용

공개용

공개용

공개용

공개용

공개용

공개용

공개용

공개용

공개용

공개용

공개용

공개용

공개용

공개용

