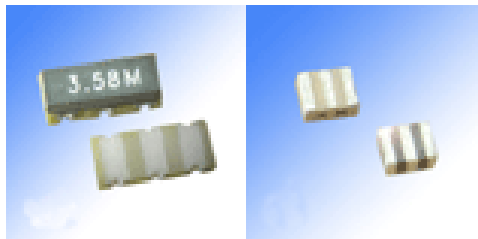


RESONATOR

ZTT

SMD TYPE

Built-in capacitor



APPLICATIONS

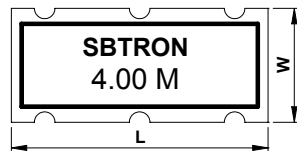
- ▶ Keyboard
- ▶ Micro processor
- ▶ Home appliance
- ▶ Remote controller

TECHNICAL CHARACTERISTICS

Part no.	Frequency range (MHz)	Frequency accuracy (@ +25 °C)	Stability in temperature (-20 °C ~ 80 °C)	Operating temperature	Aging (10 Years)
ZTTCC / MG	2.000 ~ 8.000	±0.5 %	±0.3 %	-20 °C ~ +80 °C	±0.3 %
ZTTCS / MT	7.000 ~ 13.000	±0.5 %	±0.4 %	-20 °C ~ +80 °C	±0.3 %
ZTTCS / MX	13.000 ~ 50.000	±0.5 %	±0.3 %	-20 °C ~ +80 °C	±0.3 %
ZTTCV / MT	7.000 ~ 13.000	±0.5 %	±0.4 %	-20 °C ~ +80 °C	±0.3 %
ZTTCV / MX	16.000 ~ 50.000	±0.5 %	±0.3 %	-20 °C ~ +80 °C	±0.3 %
ZTTCW / MX	20.000 ~ 48.000	±0.5 %	±0.3 %	-20 °C ~ +80 °C	±0.3 %
ZTTCR	3.580 ~ 8.000	±0.5 %	±0.3 %	-20 °C ~ +80 °C	±0.3 %

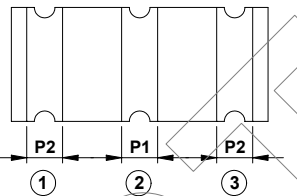
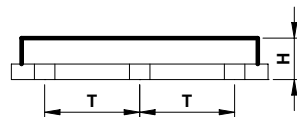
DIMENSIONS

ZTTCC and ZTTCR only

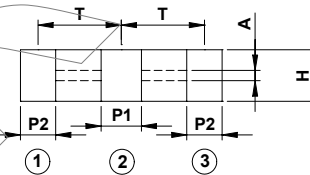
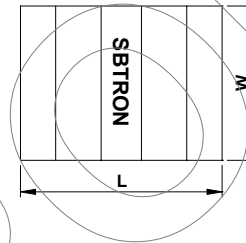


Pin assignment

- ① : Input
- ② : Ground
- ③ : Output



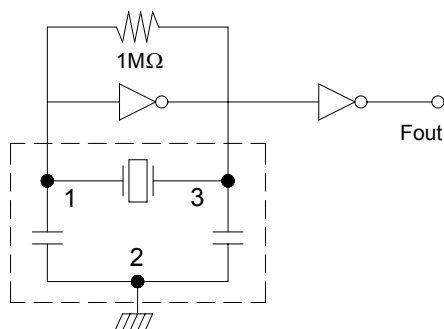
ZTTCS and ZTTCV and ZTTCW only



Part no.	Code	Dimensions (mm)					
		L	W	H	P1	P2	T
ZTTCC / MG		7.4 ±0.2	3.4 ±0.2	1.8 ±0.2	1.2 ±0.2	1.2 ±0.2	2.50 ±0.2
ZTTCS / MT		4.7 ±0.2	4.1 ±0.2	(1.2+A) ±0.2	1.0 ±0.2	0.8 ±0.2	1.95 ±0.2
ZTTCS / MX		4.7 ±0.2	4.1 ±0.2	(1.2+A) ±0.2	1.0 ±0.2	0.8 ±0.2	1.95 ±0.2
ZTTCV / MT		3.7 ±0.2	3.1 ±0.2	(1.0+A) ±0.2	0.9 ±0.2	0.7 ±0.2	1.50 ±0.2
ZTTCV / MX		3.7 ±0.2	3.1 ±0.2	(1.0+A) ±0.2	0.9 ±0.2	0.7 ±0.2	1.50 ±0.2
ZTTCW / MX		2.5 ±0.2	2.0 ±0.2	(1.5+A) ±0.2	-	-	-
ZTTCR		4.5 ±0.2	2.0 ±0.2	(1.8+A) ±0.2	-	-	-

Specifications subjects to change without notice & If you need other specifications, Contact our factory.

APPLICATION CIRCUIT



- IC : 4069UBP (in case MG type)
- IC : 4069UBP (in case MT type)
- IC : 74HCU04 (in case MX type)
- X : Ceramic resonator
- C_G : Built-in capacitor
- C_D : Built-in capacitor
- V_{DD} : +5Volt