

# OSCILLATOR SBXO - 10

TRUE TTL OSCILLATOR  
DIP PACKAGE

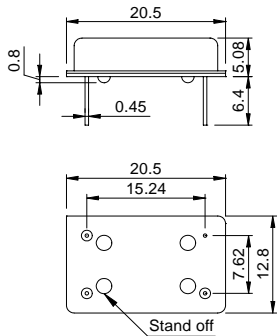
## APPLICATIONS

- ▶ Forceful fan out
- ▶ Main board
- ▶ Microprocessor
- ▶ High reliability and precision

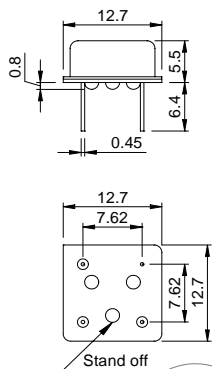
PICTURE  
AREA

### OUTLINE DIMENSIONS

< FULL SIZE / 14 PIN DIP >



< HALF SIZE / 8 PIN DIP >



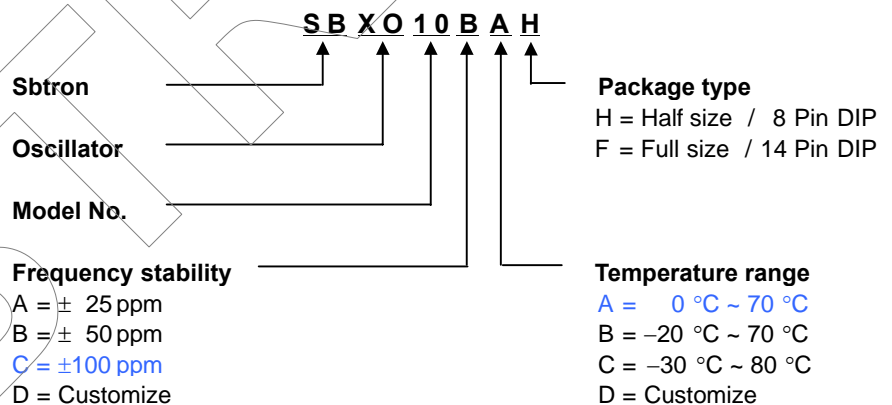
### ELECTRICAL SPECIFICATIONS

Frequency range	4.000MHz to 70.000MHz		
Frequency stability	±25ppm	±50ppm	±100ppm
	Inclusive of operating temperature		
Operating temperature range	0 °C ~ 70 °C		
Storage temperature range	-50 °C ~ 105 °C		
Input voltage	+5.0Vdc ±0.5V		
Input current	60mA max.		
"0" / "1" level	+0.4V max. / +2.4V min.		
Duty ratio	60/40% or 40/60% (typical)		
Rise & Fall time	10nS max. ( 4.000MHz ~ 31.999MHz)		
	5nS max. (32.000MHz ~ 70.000MHz)		
Start up time	10mS max. (4.000MHz ~ 7.999MHz)		
	5mS max. (8.000MHz ~ 70.000MHz)		
Fan out	True 10 TTL		
Aging (at 25 °C)	±5ppm / year max.		

### ENVIRONMENTAL & MECHANICAL SPECIFICATIONS

Shock	MIL-STD-883C, Method 2002, Condition B
Vibration	MIL-STD-883C, Method 2007, Condition A
Solderability	MIL-STD-883C, Method 2003
Seal integrity	MIL-STD-883C, Method 1014, Condition C & A2
Marking	MIL-STD-202F, Method 215

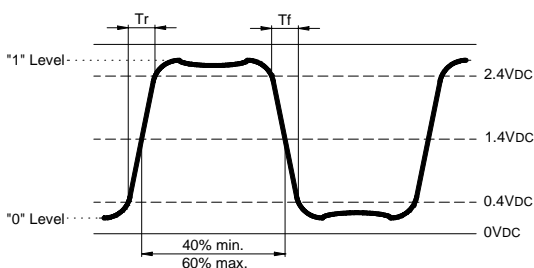
### PART NUMBERING GUIDE



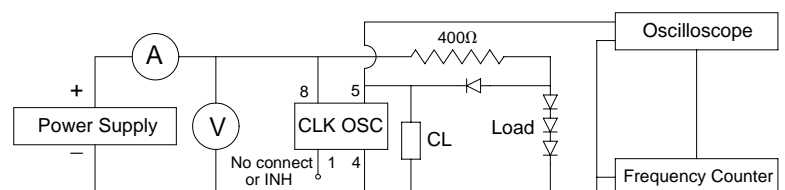
Standard specifications for product indicated in **BLUE** character

Specifications subjects to change without notice & If you need other specifications, Contact our factory.

### WAVE FORM



### TEST CIRCUIT



NOTES : (1) CL ... 15pF INCLUDES ALL STRAY AND SCOPE/FREQ.CTR. LOADING CAPACITANCE  
 (2) ALL DIODES IN916 OR EQUIVALENT